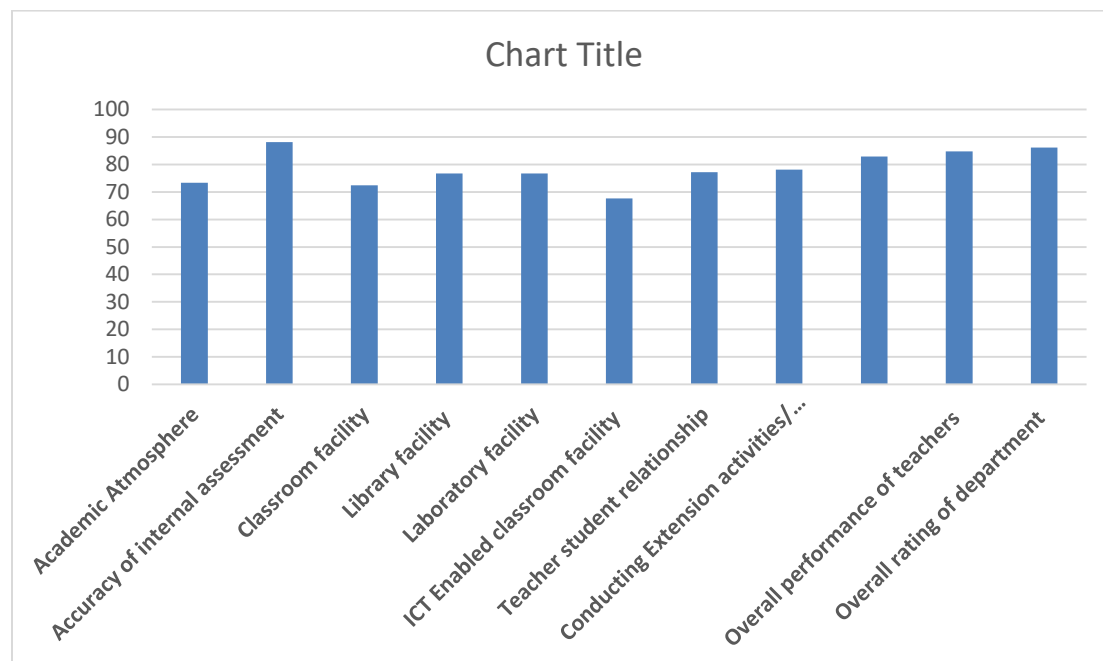


# Feedback Analysis - Department of Physics 2019-2020

## Department Evaluation 2019-2020

Academic Atmosphere	73
Accuracy of internal assessment	88
Classroom facility	72
Library facility	77
Laboratory facility	77
ICT Enabled classroom facility	68
Teacher student relationship	77
Conducting Extension activities/ Workshops/ seminars	78
Participation in teaching learning process	83
Overall performance of teachers	85
Overall rating of department	86

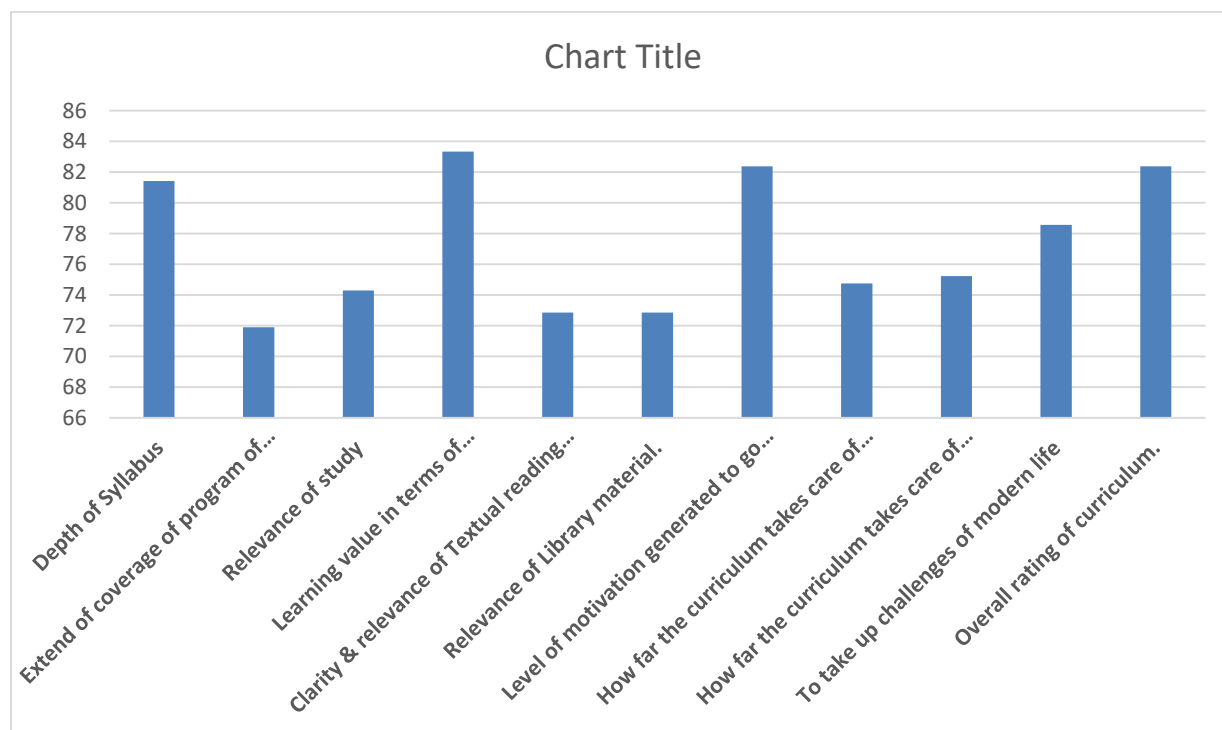


## Action Taken Report

We could understand that the accuracy of internal assessment, classroom facility, library facility, ICT enabled classroom facility was improved but required little more attention. This matter was discussed with the Principal and PTA and they offered their support and they ensure that they will lay out necessary facilities to the department.

## Curriculum Evaluation 2019-2020

Criteria	Percentage
Depth of Syllabus	81
Extend of coverage of program of study.	72
Relevance of study	74
Learning value in terms of knowledge, skills & abilities.	83
Clarity & relevance of Textual reading material.	73
Relevance of Library material.	73
Level of motivation generated to go for higher studies.	82
How far the curriculum takes care of the student requirements.	75
How far the curriculum takes care of the student requirements.	75
To take up challenges of modern life	79
Overall rating of curriculum.	82

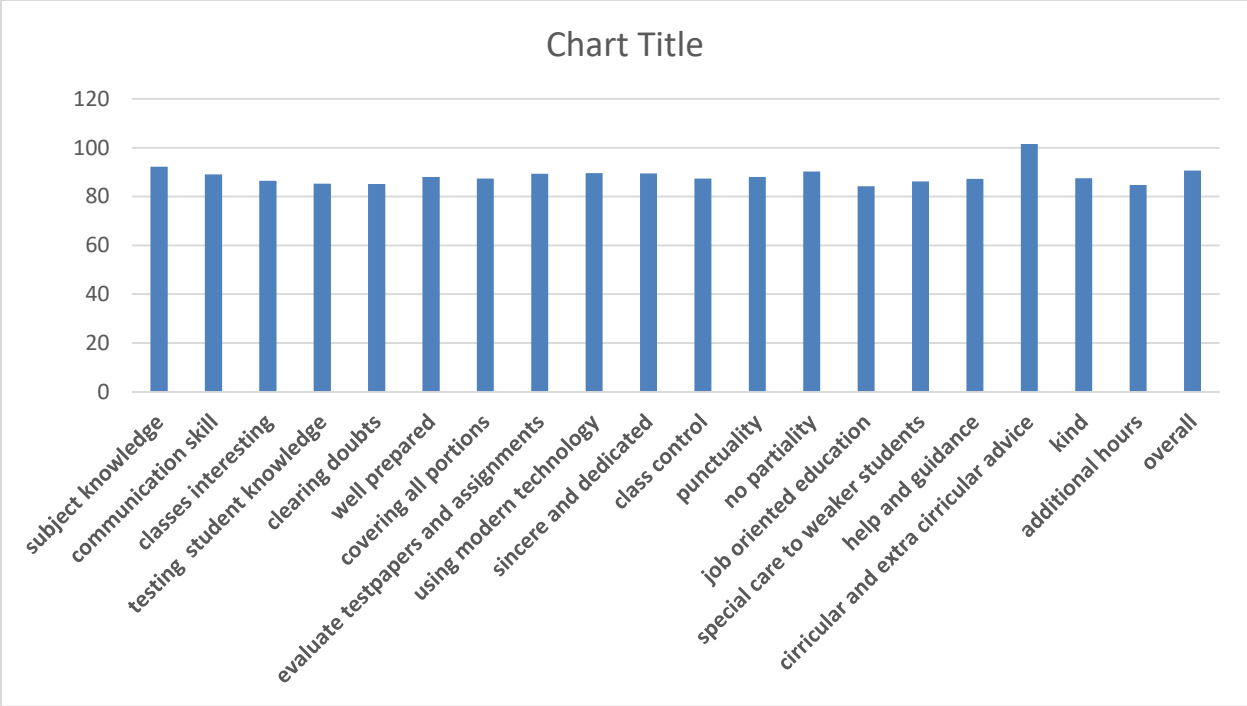


## Action Taken Report

From the above curriculum evaluation analysis, it was found that the extend of coverage of program of study clarity & relevance of textual reading material, relevance of Library material requires much more attention so it was decided to inform this matter to the members of Board of Studies.

## Faculty Evaluation 2019-2020

Criteria	Percentage
subject knowledge	92
communication skill	89
classes interesting	86
testing student knowledge	85
clearing doubts	85
well prepared	88
covering all portions	87
evaluate test papers and assignments	89
using modern technology	90
sincere and dedicated	89
class control	87
punctuality	88
no partiality	90
job oriented education	84
special care to weaker students	86
help and guidance	87
Advice on Curricular and co-curricular aspects	98
kind	87
additional hours	84
overall	90



**Action Taken Report**

By this analysis it was observed that some criteria like classes interesting , testing student knowledge, clearing doubts, job oriented education , additional hours needs much consideration. Department meeting was conducted and discussed this matters with other faculty members and each faculty members agreed that to conduct special classes and remedial classes.